

# MusikZentrum

H A N N O V E R

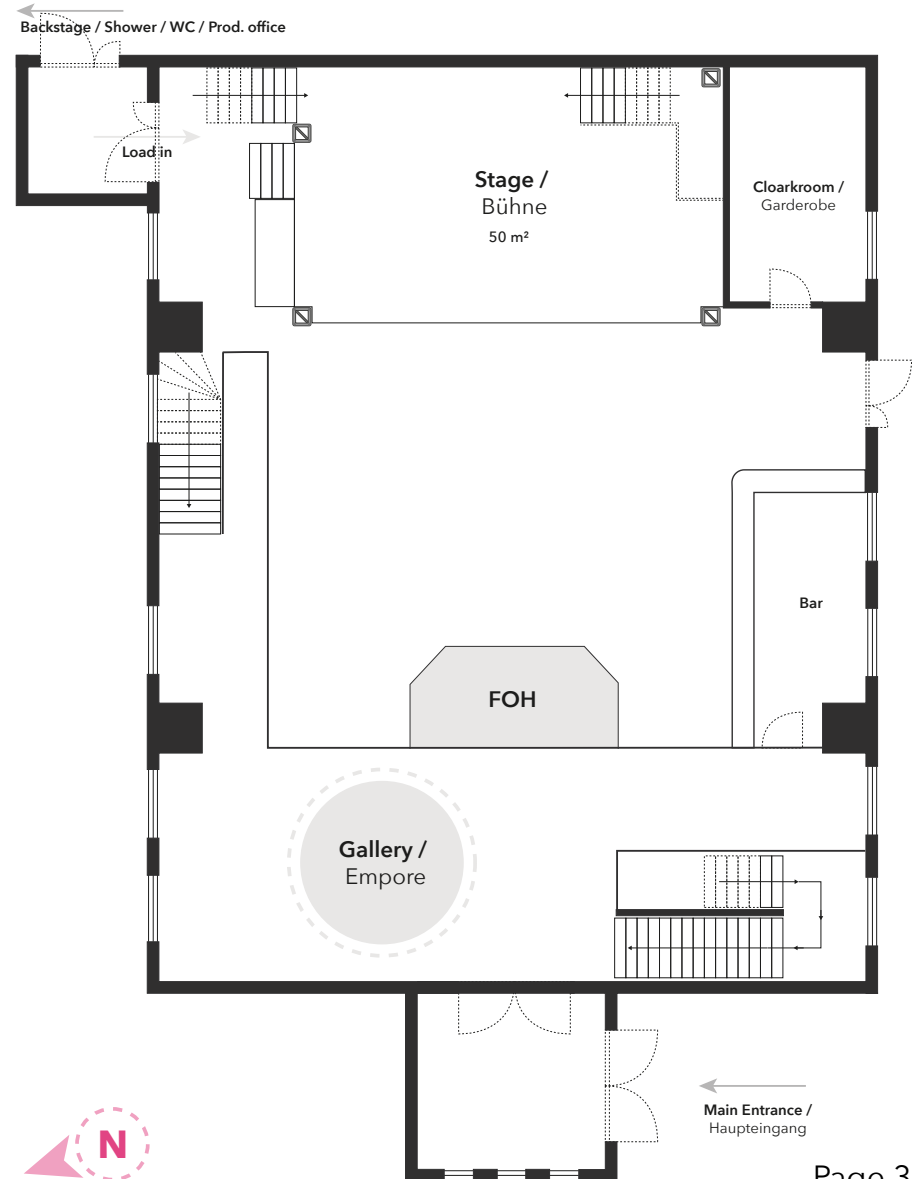
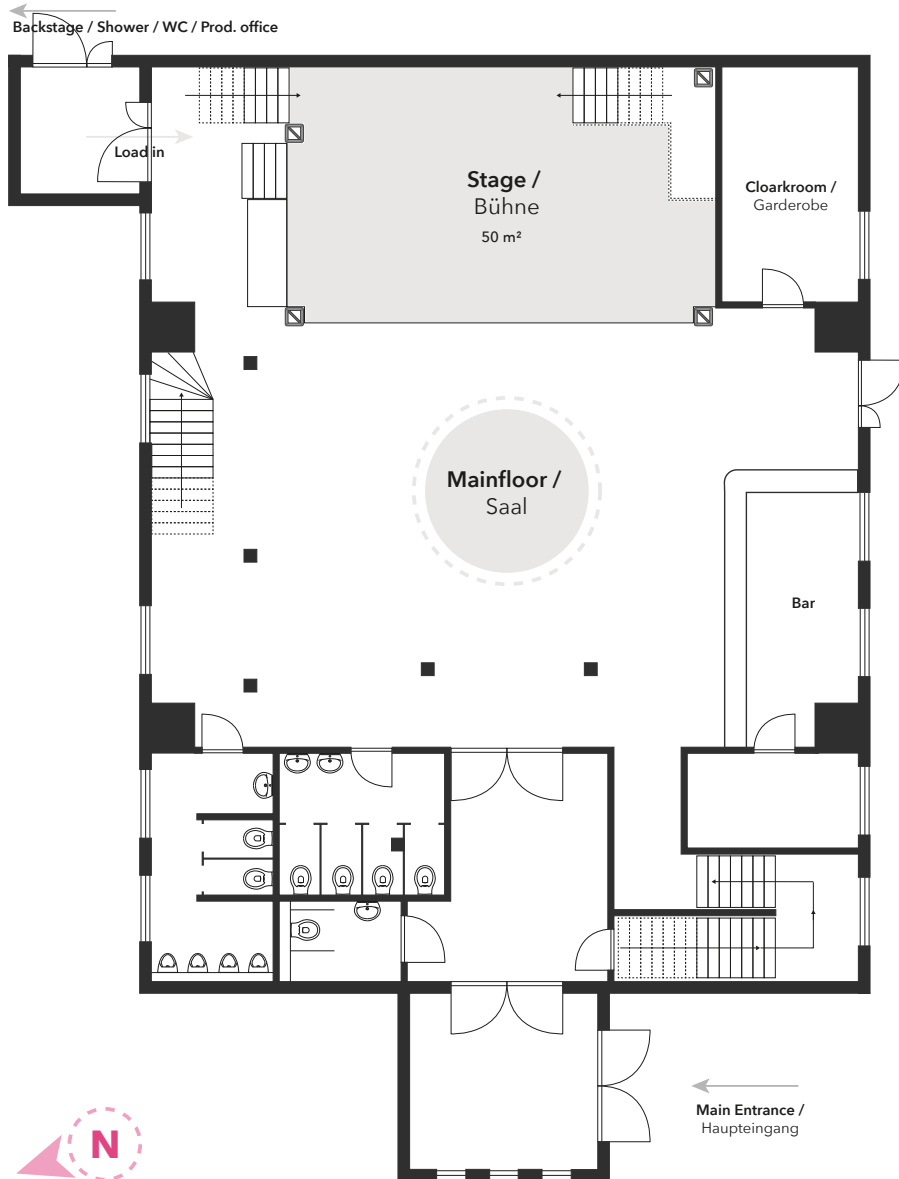
## Venue Specs

Last Update: 05/2024

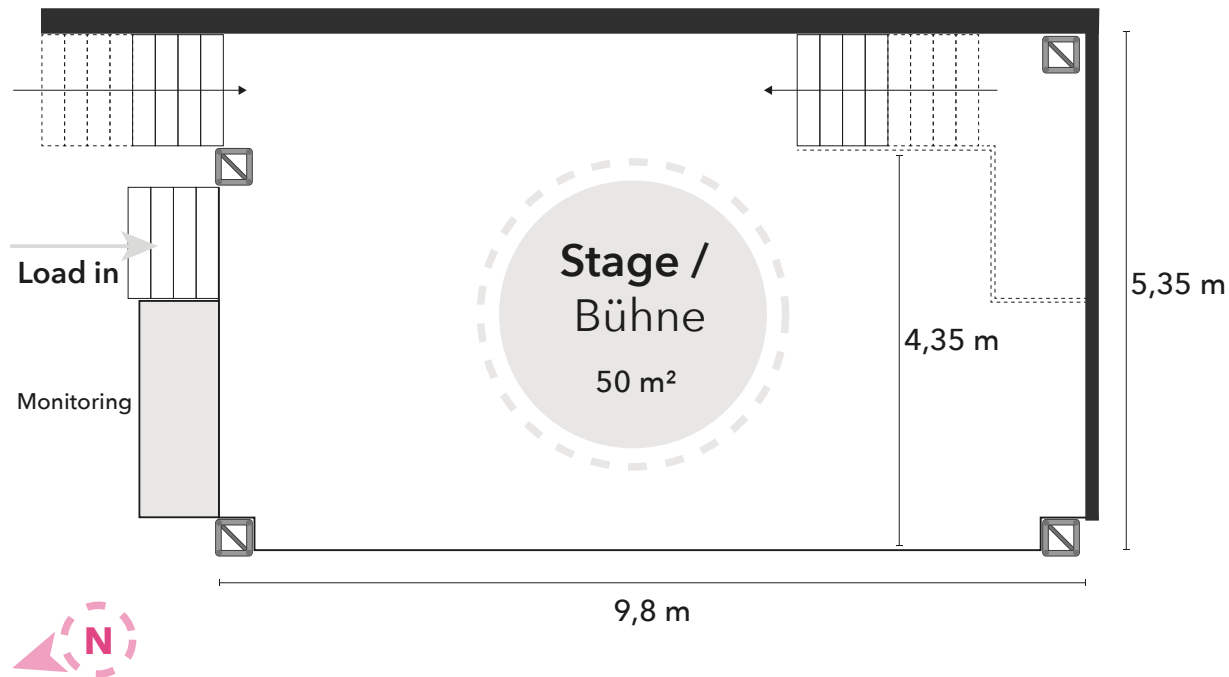
Venue	Emil-Meyer-Str. 26 - 28 D-30165 Hannover
Contact	Fon +49 (0) 511 / 260930 - 0 Fax +49 (0) 511 / 260930 - 10  <a href="mailto:info@musikzentrum-hannover.de">info@musikzentrum-hannover.de</a> <a href="http://www.musikzentrum-hannover.de">www.musikzentrum-hannover.de</a>
Technicians	Fon +49 (0) 511 / 260930 - 24  <a href="mailto:veranstaltungstechnik@musikzentrum-hannover.de">veranstaltungstechnik@musikzentrum-hannover.de</a>

## Contents

Floor plan	03
Stage	04
Sound	05
Lights	08
Video	11
Backline	12
How to find us	13
Nightliner	14



## Stage



### Stage size:

- 9,80m x 5,35m x 1,00m (W x D x H)
- 4,10m clearance

### Stage elements (Riser):

- 4x 2,00m x 1,00m (BÜTEC)
- 16x 0,20m plug-in legs
- 16x 0,40m plug-in legs
- 16x 0,60m - 1,00m telescopic legs

### Backdrop:

- 1x 8,00m 2 Point Truss, height adjustable  
(The truss is only for backdrops!)

### Staff:

Two **(2)** local technicians will be working throughout the show to assist in technical matters.  
On request the MusikZentrum can provide employees for loading / unloading.

## PA

---

### Speakers:

2x Kling & Freitag T9

4x Kling & Freitag B5

2x Kling & Freitag Gravis 12W (Delay Line)

1x Kling & Freitag Gravis 12W (Infill)

1x Kling & Freitag Gravis 8 (Outfill)

2x Kling & Freitag CA 106 (Sidefills)

### Amplifier:

3x LabGruppen FP 10000Q

### Controller:

3x Kling & Freitag CD 44

### Note:

The tops are hanging in the front truss. The subwoofers are placed under the stage. There are 8 Cat7 lines between FOH and Monitor for free usage.

## FoH

---

### Mixing console:

1x Midas M32

### Effects:

1x TC Electronics M-One (Multi-Effect Processor)

1x TC Electronics M-350 (Multi-Effect Processor)

1x Yamaha SPX 1000 ( Multi-Effect Processor)

### Others:

1x CD-Player (MP3 compatible)

## Monitoring

---

### Mixing console:

1x Midas M32 R

### Speakers:

6x Kling & Freitag Scena 12

2x dB Arena SW15 (Drumfill)

1x dB Arena (Drumfill)

2x Kling & Freitag CA1215 - 6M

### Amplifier:

1x LabGruppen FP 10000Q

1x QSC RMX 2450

1x QSC RMX 1450

1x Carver PX 1450

## Microphones / DI's

---

### Wired:

1x AKG D112

1x Sennheiser e901

1x Sennheiser e902

2x Sennheiser e602

4x Sennheiser e604

2x Sennheiser e904

1x Sennheiser e905

6x Shure SM57

4x Sennheiser e914

2x Sennheiser e614

2x Sennheiser 609

3x Sennheiser 906

1x Sennheiser MD421

1x Sennheiser BF521

5x Sennheiser e935

7x Shure SM58

3x Sennheiser e835s (as talkback)

3x Sennheiser e908 incl. MZA 900P

1x Shure Beta 91A

### Wireless:

4x Sennheiser EW500 G4 935

4x Sennheiser EW500 G4 (receiver)

2x Sennheiser EW100 G3 935

1x Sennheiser EW100 G3 945

3x Sennheiser EW100 G3 (receiver)

### DI's:

2x Palmer PAN 02 (active)

4x Palmer PAN 01 (passive)

4x Palmer PAN 04 (passive)

## Others

---

### Microphone stands:

9x Boom Stand (small)

10x Boom Stand (tall)

1x round base stand (tall)

1x round base stand (small) - incl. weight

### Multicore:

1x 32-channel XLR split for FoH & Monitor

1x CAT5e Cordial (from FoH to stage)

### Returncore:

8x XLR

### Subsnakes:

1x 12-channel subsnakes on stage

3x 8-channel subsnakes on stage

### Backline power:

(separate phases)

5x 16A pin earth socket

### FoH:

3x 16A pin earth socket

### Recording:

32-channel live recording can be provided on request.

## Lights

---

### Light console:

1x GrandMA 2 OnPC Tourpack

*(without Faderwing)*

### Dimmer:

1x Arena 1202 D  
(12 channels / 2,3 kW per channel)

1x Böttinger be D1202  
(12 channels / 2,3 kW per channel)

3x Showtec D-Pack 6  
(6 channels / 2,3 kW per channel)

2x Böttinger be D602  
(6 channels / 2,3 kW per channel)

### conventional lights (DMX 1):

8x Harmony PC Fresnel (1 kW)

3x 6er-Bars (PAR64 0,5 kW)

4x 4-Lite-Blinder

### intelligent lights (DMX 2):

6x Futurelight DMH-90

8x Robe Robin 600 LED Wash  
(4x suspended, 4x additional)

1x Martin Atomic 3000

4x Eurolite LED PAR64 (optional)

8x Expolite TourLED 50 XCR (optional)

2x Ignition Co9 LED Flood (optional)

### Effects:

1x Look Solution Unique 2.1 (Hazer)

1x Look Solution Viper (analogue)

1x Look Solution Viper NT (analogue)

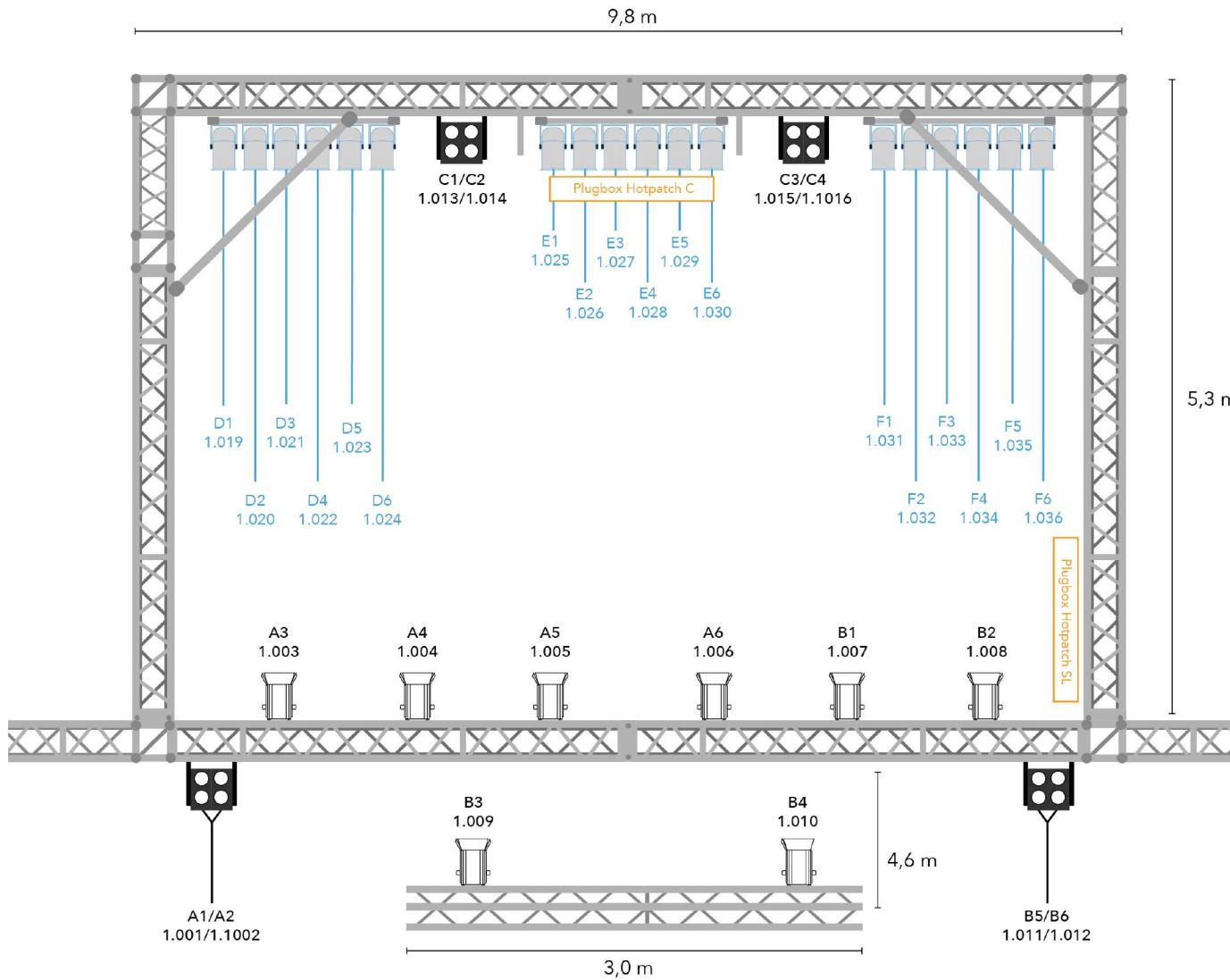
1x Disco ball incl. motor

### Others:

2x 32A CEE sub-distribution on stage



## Stageplot (conventional lights)



### Legend:



Plan Convex 1000W (8)



4-Lite-Blinder (4)



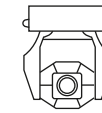
6er-Bar PAR64 500W (3)



Plugbox (2)

## Stageplot (intelligent lights)

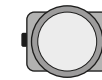
### Legend:



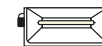
Futurelight DMH-90 (6)  
(Extended 2)



Robe Robin 600 LedWash (4)



Robe Robin 600 LedWash (4)  
(Modus 2)



Martin Atomic 3000 DMX (1)



LookSolution Unique 2.1 (1)



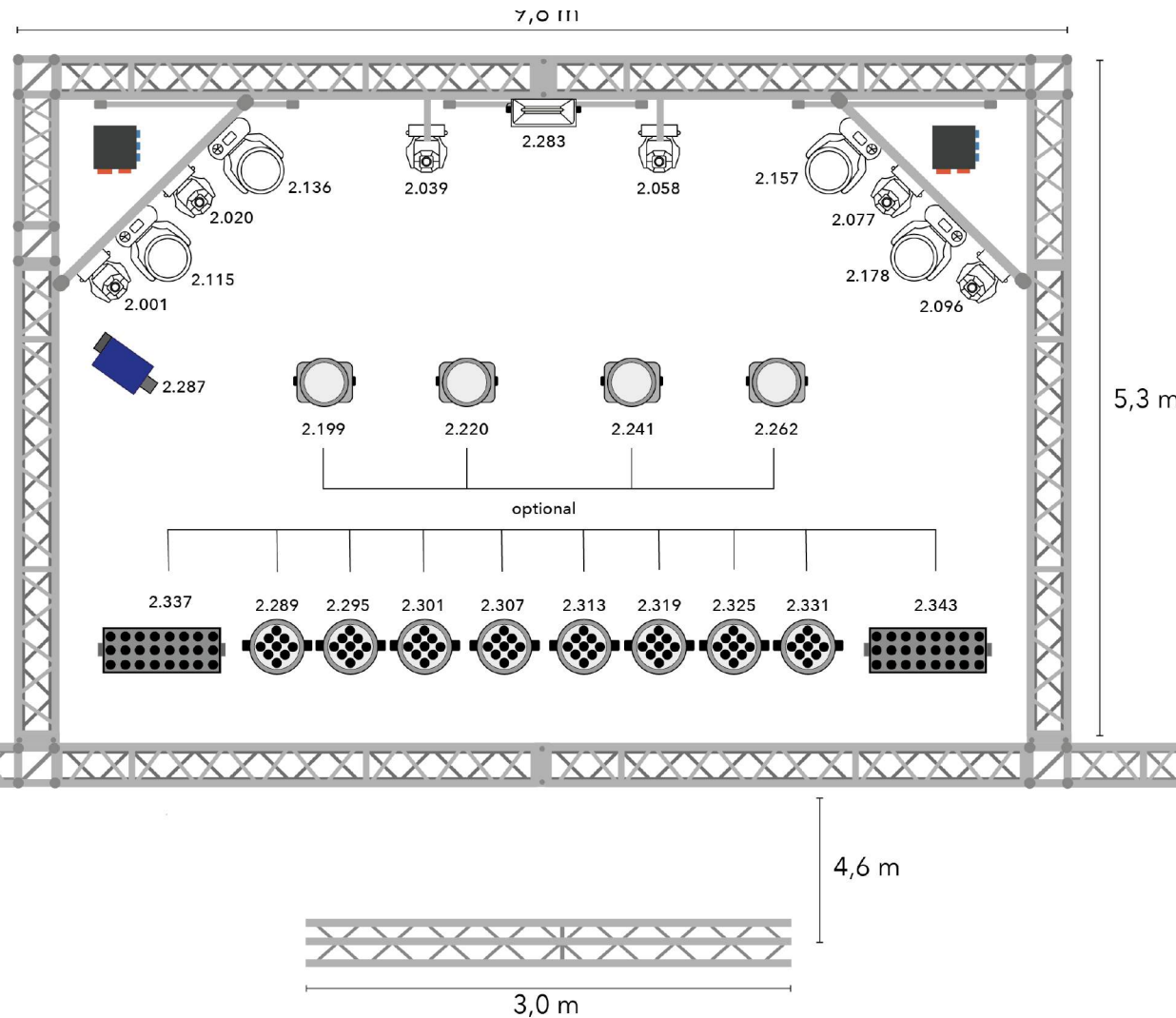
UV 32A / 400V (2)



Expolite TourLED 50XCR (8)



Ignition Co9 LED Flood



## Video (upon request)

---

**Projector:**

1x NEC PA653U

**Lens:**

1x NEC NP13ZL (1,5 - 3,02 : 1)

**Screen:**

1x AVStumpfl (4m x 2,5m)

**Camera:**

3x Blackmagic Pocket Cinema Camera 6k

**Lenses:**

2x Sigma 50 -100mm

2x Sigma 50 - 35mm

**Video mixer & preview monitors:**

1x Blackmagic ATEM Production Studio 4k

1x Blackmagic Smartview 4k

1x Blackmagic Smartview Duo

1x Blackmagic Smartscope Duo 4k

1x Skaarhoj Live Fly

**Capture Card:**

1x Marshall VAC 23SHU3

**Others:**

3x 50m SDI Leitung

1x Elgato Stream Deck

**Stands:**

3x Leofoto VT-20

3x Manfrotto Magic Arm 143

## Drums

---

**Drums:**

Bass Drum: Dixon Artisan 22"

Snare: Sonor Force 1007 14"

Toms: Dixon Artisan (rack tom) 10"  
Dixon Artisan (rack tom) 12"  
Dixon Artisan (floor tom) 14"  
Dixon Artisan (floor tom) 16"

Cymbals: Paiste 2002 HiHat 14"  
Istanbul Mehmet Traditional  
Crash Dark 17"  
Istanbul Mehmet Traditional  
Crash Dark 18"  
Istanbul Mehmet Traditional  
Ride Orig. 20"

Hardware: 1x Dixon HiHat Stands  
1x Dixon Snare Stand  
5x Cymbal Stands  
(inkl. Tom-Mount)

## Amps & Speaker

---

**Bass:**

Bass Amps: Ampeg PF-500 (500W)  
EBS Reidmar (250W)

Bass cabinet: EBS Classic Line (4 x 10")

**Guitar:**

Guitar Amps: Marshall JCM900 (100W)  
Marshall JMP (100W)  
Marshall JVM 205H (50W)

Guitar Speaker: Marshall 1960A Speaker  
(4 x 12")  
Marshall 1960B Speaker  
(4x 12")  
Marshall 1936 Speaker  
(2x 12")

## DJ

---

**Turntables:**

2x Technics 1210 M3D (without systems)

**Mixer:**

1x Pioneer DJM-900NXS2

## Route map

---

[Click for Google Maps Link](#)



**NIGHTLINER DRIVEWAY**



PARKING SLOT



---

**Arrival:**

Turn over Kopernikusstraße into Emil-Meyer-Straße

**Power:**

1x 32A CEE

2x 16A Schuko